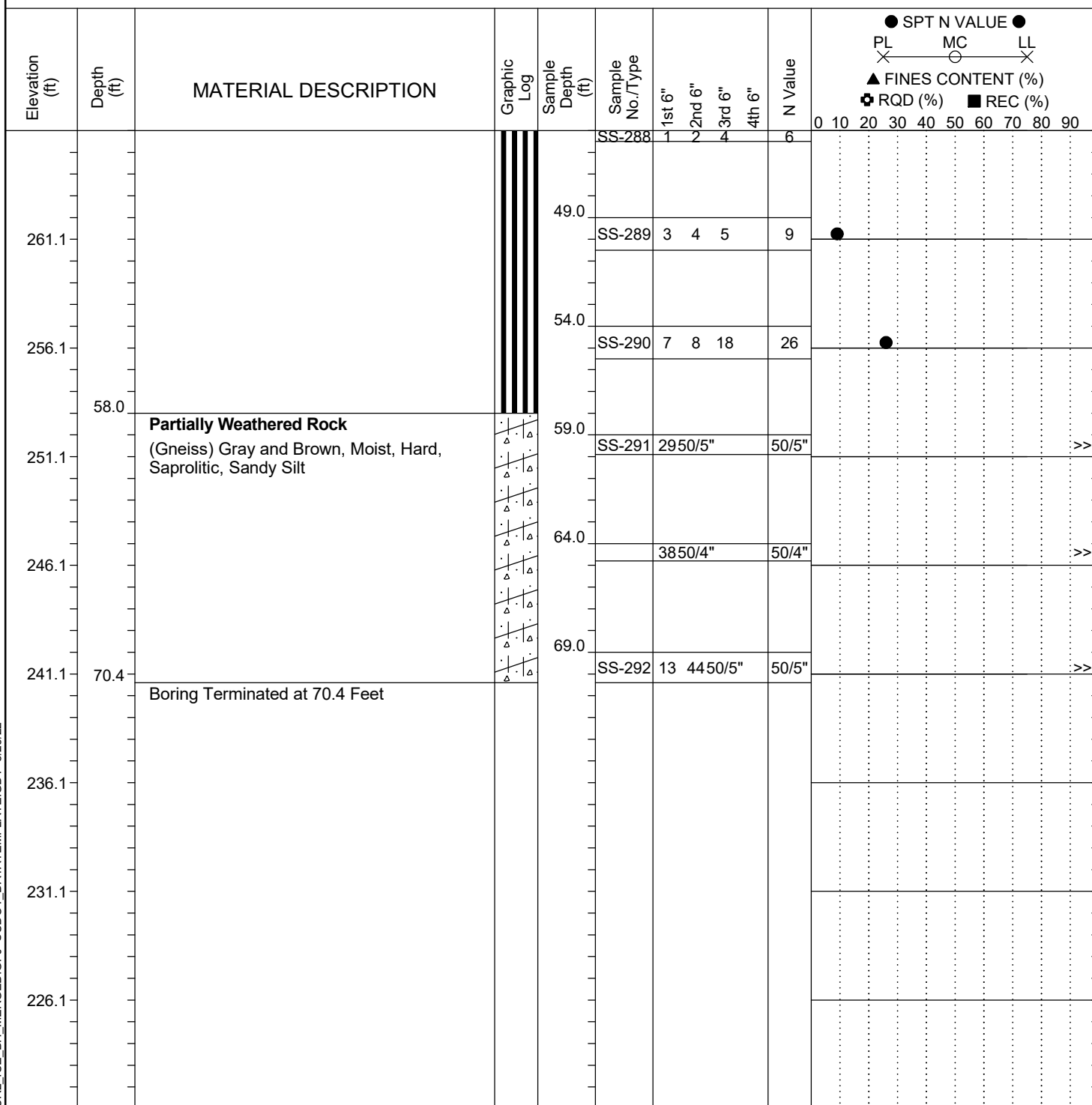


Project ID: P039719				County: Richland		Boring No.: G-116	
Site Description: Carolina Crossroads Phase 2		Route: Ramp					
Eng./Geo.: M. Stanbury		Boring Location: 397+95		Offset: 60 RT		Alignment: RAMPF	
Elev.: 311.1 ft	Latitude: 34.03937795	Longitude: -81.09530646	Date Started: 3/8/2022				
Total Depth: 70.4 ft	Soil Depth: 70.4 ft	Core Depth: N/A ft	Date Completed: 3/8/2022				
Bore Hole Diameter (in): 2.25		Sampler Configuration		Liner Required: Y (N)		Liner Used: Y (N)	
Drill Machine: D-50 #439		Drill Method: RW		Hammer Type: Automatic		Energy Ratio: 90.8%	
Core Size: N/A		Driller: R. Cassell		Groundwater: TOB N/A		24HR 19.8 ft	



LEGEND

SAMPLER TYPE		DRILLING METHOD	
SS - Split Spoon	NQ - Rock Core, 1-7/8"	HSA - Hollow Stem Auger	RW - Rotary Wash
UD - Undisturbed Sample	CU - Cuttings	CFA - Continuous Flight Augers	RC - Rock Core
AWG - Rock Core, 1-1/8"	CT - Continuous Tube	DC - Driving Casing	